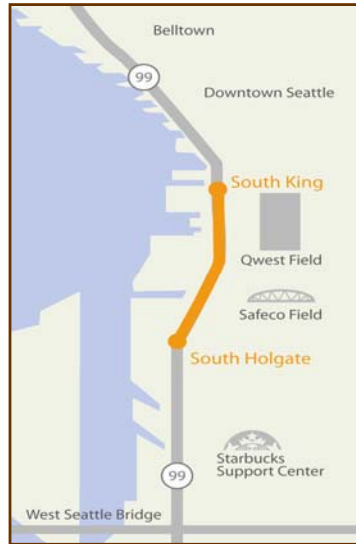


## ALI

- Greet and thank attendees.

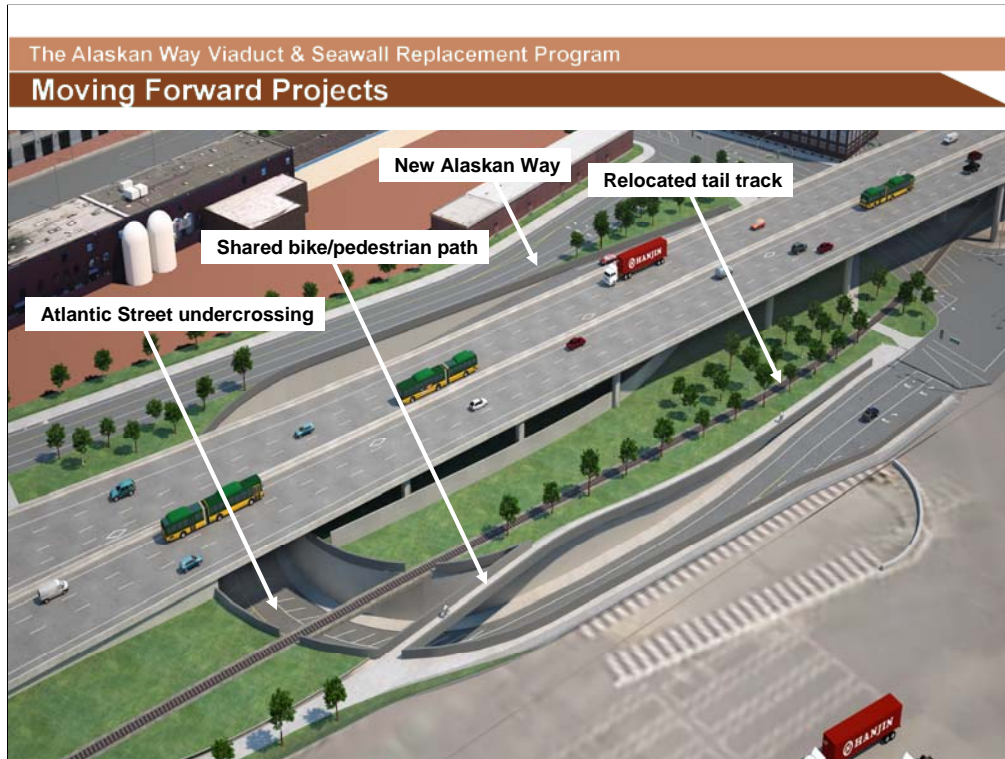
## Holgate to King Viaduct Replacement



- Largest of Moving Forward projects
- Replaces 40 percent of existing viaduct
- Improves public safety, access and traffic mobility
- Connects to bored tunnel and city street grid
- Transition structures and detours now in design

## ALI

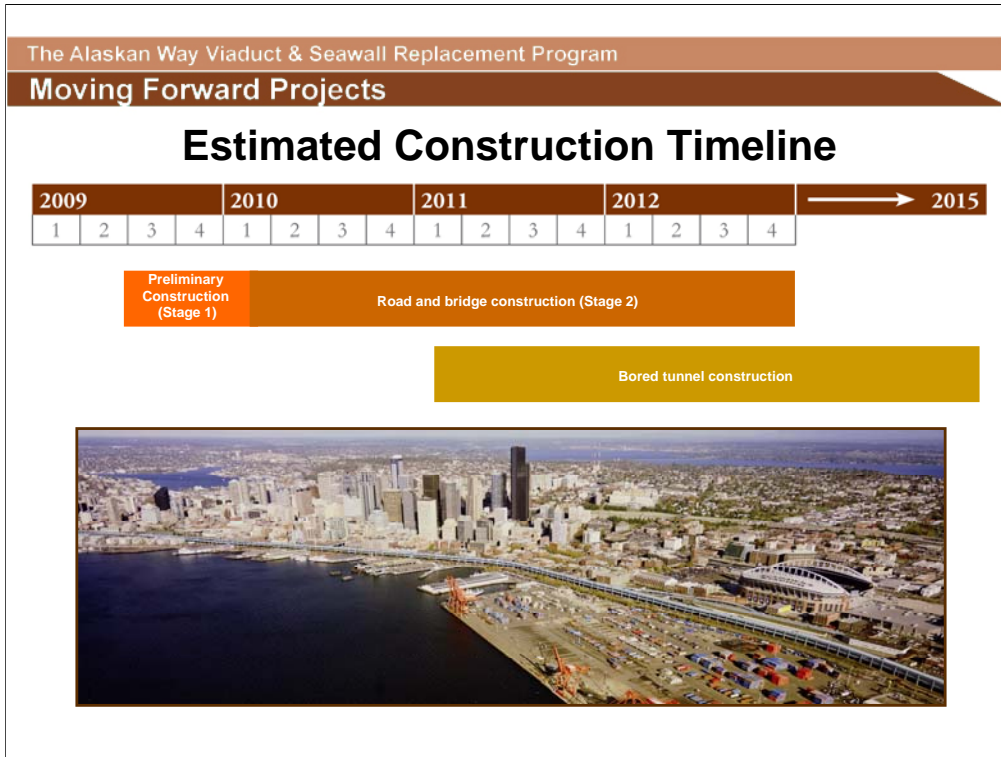
- The Holgate to King replacement is a safety project that will remove approximately one mile, or 40 percent, of the existing viaduct.
- This work will improve:
  - Public safety
  - Access to downtown Seattle
  - Local mobility for pedestrians, bicyclists, vehicles and freight
- It will connect to the bored tunnel and the city street grid.
- Because we designed this project to be option neutral, the tunnel decision did not change our design south of S. Royal Brougham Way.
- We are now designing transition structures and detours to ensure we stay on schedule.



## ALI

Here are the main features of the new south end:

- Side-by-side roadway
- Three lanes in each direction
- Both surface and elevated sections
- Relocated tail track
- New undercrossing at Atlantic
- New on- and off-ramps near stadiums
- Realigned Alaskan Way
- Bicycle and pedestrian facilities
- Surface street improvements



### ALI

- Preliminary construction (utility relocation) will be finished early next year, when we plan to begin road and bridge construction.
- The project will be operationally complete by the end of 2012.
- Tunnel construction is scheduled to begin in 2011.

## AWV Replacement – Holgate to King (Stage 1)

### Preliminary construction:

- 26kV electrical duct bank and vault relocation
- Water service line installation
- Communications vault and duct bank installation
- Excavation, shoring and backfilling of trenches
- Contaminated/unsuitable soil excavation and disposal



## PAUL

- Stage 1 preliminary construction is the first contract under the Holgate to King viaduct replacement project.
- The goal of Stage 1 is to relocate utilities and prepare the project area for viaduct removal.
- The Stage 1 contract was advertised for competitive bids on Mon. March 16.
- Bids will be accepted through April 28.
- Bid documents are available via our contracting Web page – the address is listed on the back of our contracting folio.
- Because the contract is out for bids, we cannot answer any questions about it.
- We will, however, provide an overview of the work elements.

### Stage 1 construction will include:

- 26kV electrical duct bank and vault relocation
- Water service line installation
- Communications vault and duct bank installation
- Excavation, shoring, and backfilling of trenches
- Contaminated/unsuitable soil excavation and disposal

**Moving Forward Projects**

## **AWV Replacement – Holgate to King (Stage 1)**

**Preliminary construction:**

- Erosion and sedimentation control
- Temporary lighting
- Treatment or re-injection of excavation water
- Traffic control
- Pavement and site restoration
- Construction: June 2009 – Jan. 2010



## **PAUL**

Stage 1 construction will include:

- Erosion and sedimentation control
- Temporary lighting
- Treatment or re-injection of excavation water
- Traffic control
- Pavement and site restoration

Moving Forward Projects



## Traffic Control

- SR 99 traffic won't be affected by Stage 1
- Temporary detours and lane closures on:
  - Railroad Way S.
  - S. Dearborn Street
  - S. Royal Brougham Way
  - S. Atlantic Street
  - Colorado Avenue S.
  - Alaskan Way S.
  - East Marginal Way S.
- Closures will be coordinated around event traffic and other busy times

## PAUL

Stage 1 construction won't affect SR 99, but will have some localized impacts on surfaces streets, including:

- Railroad Way S.
- S. Dearborn Street
- S. Royal Brougham Way
- S. Atlantic Street
- Colorado Avenue S.
- Alaskan Way S.
- East Marginal Way S.



## **AWV Replacement – Holgate to King (Stage 2)**

### **Road and bridge construction**

- South end viaduct removal
- Replacement structure between Holgate and King
- S. Atlantic Street undercrossing
- Tail track relocation
- Bicycle/pedestrian facilities
- Construction: Early 2010 – 2012

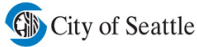


## **ALI**

- Stage 2 construction will begin in early 2010 and include:
  - Viaduct removal
  - Replacement structure between Holgate and King
  - Atlantic Street undercrossing
  - Tail track relocation
  - Bicycle/pedestrian facilities
- The project will be operationally complete by 2012



# SODO Construction Timeline



March 2009

| AWV and Concurrent Projects  | 2008 |   |   |   | 2009 |   |   |   | 2010 |   |   |   | 2011 |   |   |   | 2012 |   |   |   |
|--|------|---|---|---|------|---|---|---|------|---|---|---|------|---|---|---|------|---|---|---|
|  | 1    | 2 | 3 | 4 | 1    | 2 | 3 | 4 | 1    | 2 | 3 | 4 | 1    | 2 | 3 | 4 | 1    | 2 | 3 | 4 |
| 1 S. Holgate Street to S. King Street Viaduct Replacement                                    |      |   |   |   |      |   |   |   |      |   |   |   |      |   |   |   |      |   |   |   |
| 2 First Avenue Paving<br>• Dearborn to Stacy,<br>Spokane to E. Marginal<br>• Stacy to Horton |      |   |   |   |      |   |   |   |      |   |   |   |      |   |   |   |      |   |   |   |
| 3 SR 519 Phase 2   |      |   |   |   |      |   |   |   |      |   |   |   |      |   |   |   |      |   |   |   |
| 4 Electrical Line Relocation   |      |   |   |   |      |   |   |   |      |   |   |   |      |   |   |   |      |   |   |   |
| 5 Spokane Street<br>• Fourth Avenue Off-Ramp<br>• Viaduct widening                           |      |   |   |   |      |   |   |   |      |   |   |   |      |   |   |   |      |   |   |   |
| 6 East Marginal Way Grade Separation<br>(Port of Seattle project: began in 2007)             |      |   |   |   |      |   |   |   |      |   |   |   |      |   |   |   |      |   |   |   |
| 7 East Duwamish Waterway Rehabilitation Project  |      |   |   |   |      |   |   |   |      |   |   |   |      |   |   |   |      |   |   |   |
| 8 Increased transit and other improvements*  |      |   |   |   |      |   |   |   |      |   |   |   |      |   |   |   |      |   |   |   |

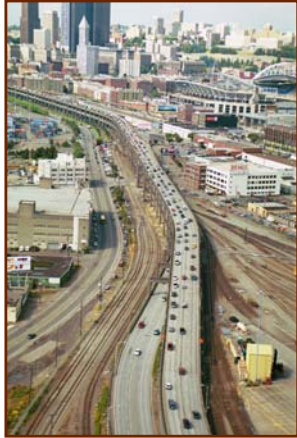


Email [SODOConstruction@seattle.gov](mailto:SODOConstruction@seattle.gov) to receive weekly email updates about traffic detours and other construction news in SODO.

## ALI

- It's important to note that there are a number of construction projects occurring or planned for SODO.
- We've been coordinating with the city, county and Port of Seattle to complete these projects before the most disruptive AWV-related construction begins in 2011.
- First Avenue paving is expected to be finished this fall.
- SR 519 is scheduled to be finished in summer 2010.
- Spokane Street construction will be finished in 2011.
- The Port's East marginal Way Grade Separation project just received funding this week to ensure it's finished by 2011.
- The East Duwamish Waterway Rehabilitation Project will be finished next year.

## **Alaskan Way Viaduct and Seawall Replacement Program**



**Follow our progress: [www.alaskanwayviaduct.org](http://www.alaskanwayviaduct.org)**

### **ALI**

- Our Web site contains a wealth of information about the project. I encourage you to visit and look around.