

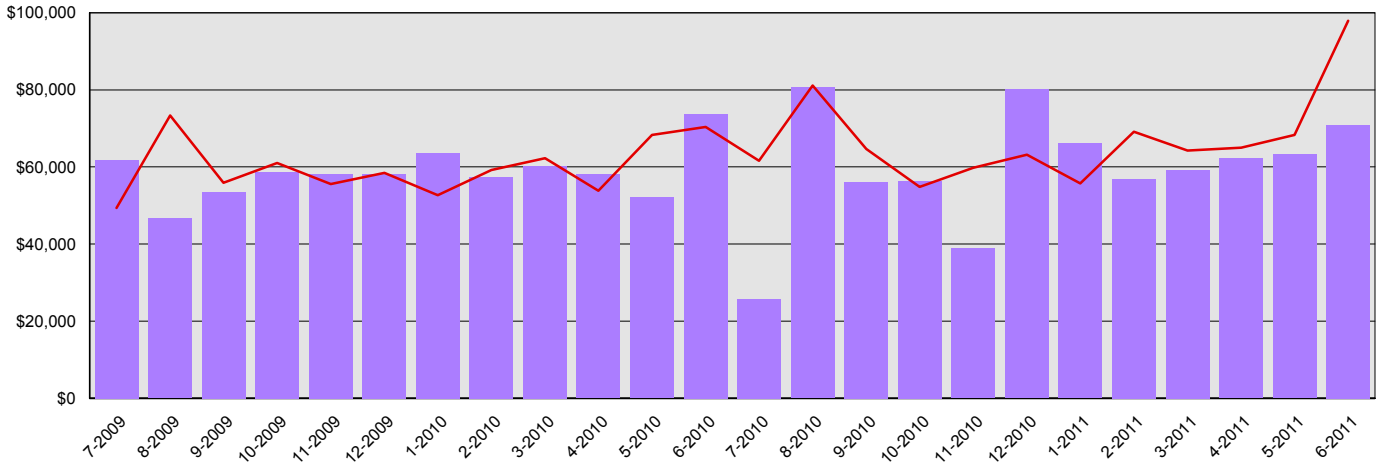
Department of Transportation

Summary Financial Report for 2009-11 Biennium to Date

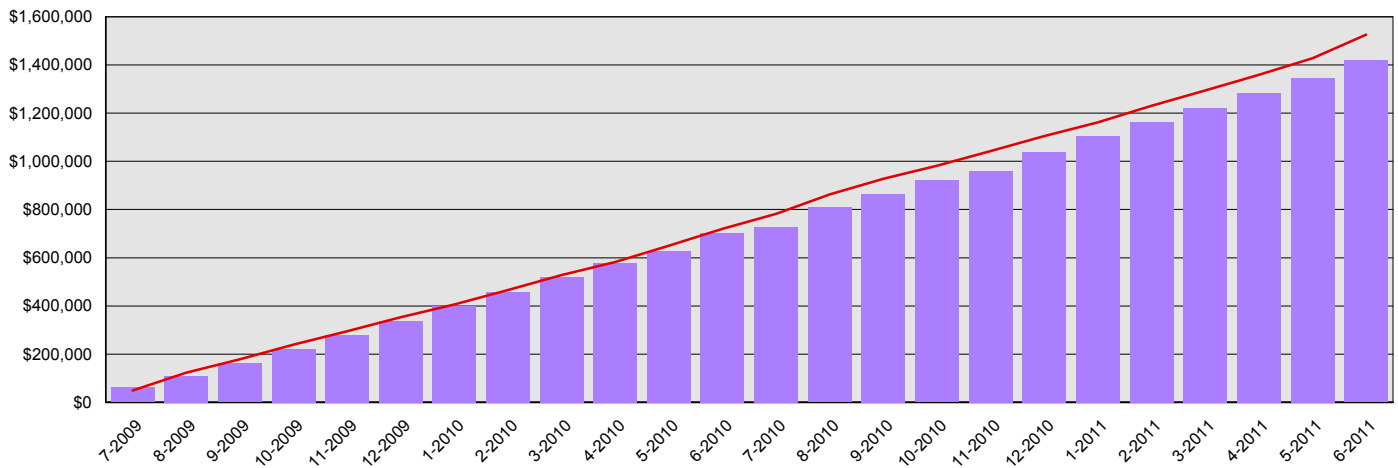
Dollars in Thousands

All Funds Variance to Date	\$107,520 Underexpenditure	7.0% Underexpenditure
-----------------------------------	-----------------------------------	------------------------------

Monthly Planned vs. Actual Expenditures - All Funds



Planned vs. Actual Cumulative Expenditures - All Funds



Actuals (Vertical Bars)

Estimates (line)

Department of Transportation
Summary Financial Report for 2009-11 Biennium to Date

Dollars in Thousands

Program/Fund Expenditure Detail

Expenditures by Program	Estimate¹	Actual	Variance	% Var.
Toll Operations and Maintenance	\$28,045	\$24,204	\$3,841	13.7%
Information Technology	\$73,232	\$72,257	\$975	1.3%
Facility Maintenance, Operations and Construction - Operating	\$24,723	\$23,792	\$931	3.8%
Transportation Equipment Fund	\$137,440	\$107,849	\$29,591	21.5%
Aviation	\$5,943	\$5,200	\$743	12.5%
Program Delivery Management and Support	\$48,371	\$46,810	\$1,561	3.2%
Transportation Economic Partnerships Program-Operating	\$735	\$638	\$97	13.2%
Highway Maintenance and Operations	\$366,421	\$359,459	\$6,962	1.9%
Traffic Operations-Operating	\$51,849	\$50,261	\$1,588	3.1%
Transportation Management and Support	\$30,516	\$28,962	\$1,554	5.1%
Transportation Planning, Data and Research	\$52,715	\$45,834	\$6,881	13.1%
Charges From Other Agencies	\$88,292	\$76,768	\$11,524	13.1%
Public Transportation	\$125,087	\$104,588	\$20,499	16.4%
Washington State Ferries	\$449,362	\$432,663	\$16,699	3.7%
Rail - Operating	\$31,857	\$27,896	\$3,961	12.4%
Local Programs - Operating	\$11,137	\$11,023	\$114	1.0%
Total	\$1,525,725	\$1,418,204	\$107,521	7.0%

Expenditure by Fund Group	Estimate¹	Actual	Variance	% Var.
Other Funds Federal	\$41,602	\$30,301	\$11,301	27.2%
Other Funds Private/Local	\$10,077	\$8,305	\$1,772	17.6%
Other Funds Non-Appropriated	\$137,574	\$108,036	\$29,538	21.5%
Other Funds State	\$1,336,471	\$1,271,562	\$64,909	4.9%
Total	\$1,525,724	\$1,418,204	\$107,520	7.0%

FTEs by Program	Estimate¹	Actual	Variance	% Var.
Toll Operations and Maintenance	16.4	14.0	2.4	14.6%
Information Technology	234.3	233.8	0.5	0.2%
Facility Maintenance, Operations and Construction - Operating	74.7	67.6	7.1	9.5%
Transportation Equipment Fund	209.3	206.5	2.8	1.3%
Aviation	10.6	11.2	(0.6)	-5.7%
Program Delivery Management and Support	232.6	218.1	14.5	6.2%
Transportation Economic Partnerships Program-Operating	2.0	2.1	(0.1)	-5.0%
Highway Maintenance and Operations	1,474.2	1,435.6	38.6	2.6%
Traffic Operations-Operating	250.1	234.3	15.8	6.3%
Transportation Management and Support	185.6	196.4	(10.8)	-5.8%
Transportation Planning, Data and Research	190.6	176.5	14.1	7.4%
Public Transportation	30.5	29.6	0.9	3.0%
Washington State Ferries	1,649.2	1,529.7	119.5	7.2%
Rail - Operating	10.1	9.9	0.2	2.0%
Local Programs - Operating	43.0	42.7	0.3	0.7%
Total	4,613.3	4,407.9	205.2	4.4%

1 Estimates include the OFM Official Allotment plus Unanticipated Receipts

2 Only includes Accounts for the Administering Agency

Negative Variance - Denotes Possible Problem

Department of Transportation
Summary Financial Report for 2009-11 Biennium to Date

Dollars in Thousands

Revenue Detail

Fund	Estimate ¹	Actual	Variance	% Var.
General Fund	\$522	\$533	\$11	2.1%
Essential Rail Assistance Account	\$172	\$203	\$31	18.0%
Aeronautics Account	\$626	\$1,029	\$403	64.4%
Produce Railcar Pool Account	\$130	\$89	(\$41)	-31.5%
Transportation Infrastructure Account	\$950	\$87	(\$863)	-90.8%
Highway Infrastructure Account	\$0	\$0	\$0	0.0%
Puget Sound Capital Construction Account	\$72,800	\$34,446	(\$38,354)	-52.7%
High-Occupancy Toll Lanes Operations Account	\$1,520	\$1,254	(\$266)	-17.5%
Transportation Partnership Account	\$300	\$265	(\$35)	-11.7%
Motor Vehicle Account	\$1,267,817	\$1,058,200	(\$209,617)	-16.5%
Puget Sound Ferry Operations Account	\$314,128	\$301,776	(\$12,352)	-3.9%
Freight Mobility Multimodal Account	\$2,438	\$0	(\$2,438)	-100.0%
State Route Number 520 Corridor Account	\$35,169	\$691	(\$34,478)	-98.0%
Special Category C Account	\$0	\$12	\$12	0.0%
Multimodal Transportation Account	\$56,800	\$31,755	(\$25,045)	-44.1%
Transportation Equipment Account	\$125,879	\$123,233	(\$2,646)	-2.1%
Tacoma Narrows Toll Bridge Account	\$103,569	\$92,143	(\$11,426)	-11.0%
Transportation 2003 Account (Nickel Account)	\$340	\$199	(\$141)	-41.5%
Puyallup Tribal Settlement Account	\$0	\$4	\$4	0.0%
Miscellaneous Program Account	\$0	\$315	\$315	0.0%
Total	\$1,983,160	\$1,646,234	(\$336,926)	-17.0%

Revenue by Fund Group

Fund Group	Estimate ¹	Actual	Variance	% Var.
General Fund State	\$522	\$533	\$11	2.1%
Other Funds Federal	\$1,258,769	\$1,009,619	(\$249,150)	-19.8%
Other Funds Private/Local	\$115,731	\$75,124	(\$40,607)	-35.1%
Other Funds State	\$608,138	\$560,957	(\$47,181)	-7.8%
Total	\$1,983,160	\$1,646,233	(\$336,927)	-17.0%

Fund Balances Showing Deficits ²

Fund	BTD Balance	Proj. Balance
State Route Number 520 Corridor Account	(\$138)	(\$138)

1 Estimates include the OFM Official Allotment plus Unanticipated Receipts

2 Only includes Accounts for the Administering Agency

Negative Variance - Denotes Possible Problem