

**PHASE 1A AUGUST 15, 2011 - MAY 4, 2012**

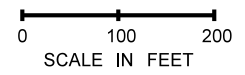
| NOTES | CONTRACT |  |  |
|-------|----------|--|--|
| 1     | TU       | BUILD AND MAINTAIN SHARED ACCESS ROAD  | AUGUST 2011 - MAY 2016   |
| 3     | TU       | DISTRIBUTION AND COMMUNICATION DUCT BANKS.   | WORK COMPLETE, INCLUDING TIE-IN PRIOR TO DEMOLITION OF BENTS 121 - 124 |
| 4     | -        | BNSF TAIL TRACK RUNS ALONG THE WEST PERIMETER OF THE STAGING AREA FROM ROYAL BROUGHAM TO KING STREET. SEE PLAN SHEETS. |  |
| 5     | TU       | RAILROAD WAY RAMPS ABOVE. STAGING PERMITTED BELOW RAMPS.   |  |

| ACTIVITY IDENTIFIER | CONTRACT | ACTIVITY  | TIMING                         | EARLY CONSTRUCTION OPTIONS  |
|---------------------|----------|---|--------------------------------|-----------------------------|
| 1                   | H2K      | CONSTRUCT WEST HALF OF BRIDGE H2K 99/540.   | WEST HALF SEPT 2012 - FEB 2012 | H2K - JULY 2011*            |
| 2                   | H2K      | CONSTRUCT SB WOSCA DETOUR FROM H2K STRUCTURE NORTH TO THE ALASKAN WAY VIADUCT RAMPS |                                |                             |
| 3                   | H2K      | CONSTRUCT NB WOSCA DETOUR EAST OF THE EXISTING VIADUCT                              |                                |                             |
| 5                   | H2K / TU | UTILITY RELOCATIONS   |                                |                             |
|                     | H2K      | COMMUNICATIONS  |                                |                             |
|                     | TU       | 115kv - POWER (DURING SCL SPRING WINDOW)  |                                | MARCH 2012 - MAY 2012       |
|                     | TU       | WATER, STORM AND SEWER  |                                | OCTOBER 2011 - JANUARY 2012 |
| 6                   | TU       | BEGIN SUPPORT OF EXCAVATION (OUTSIDE OF VIADUCT FOOTPRINT)                          |                                | JANUARY 2012 - APRIL 2012   |

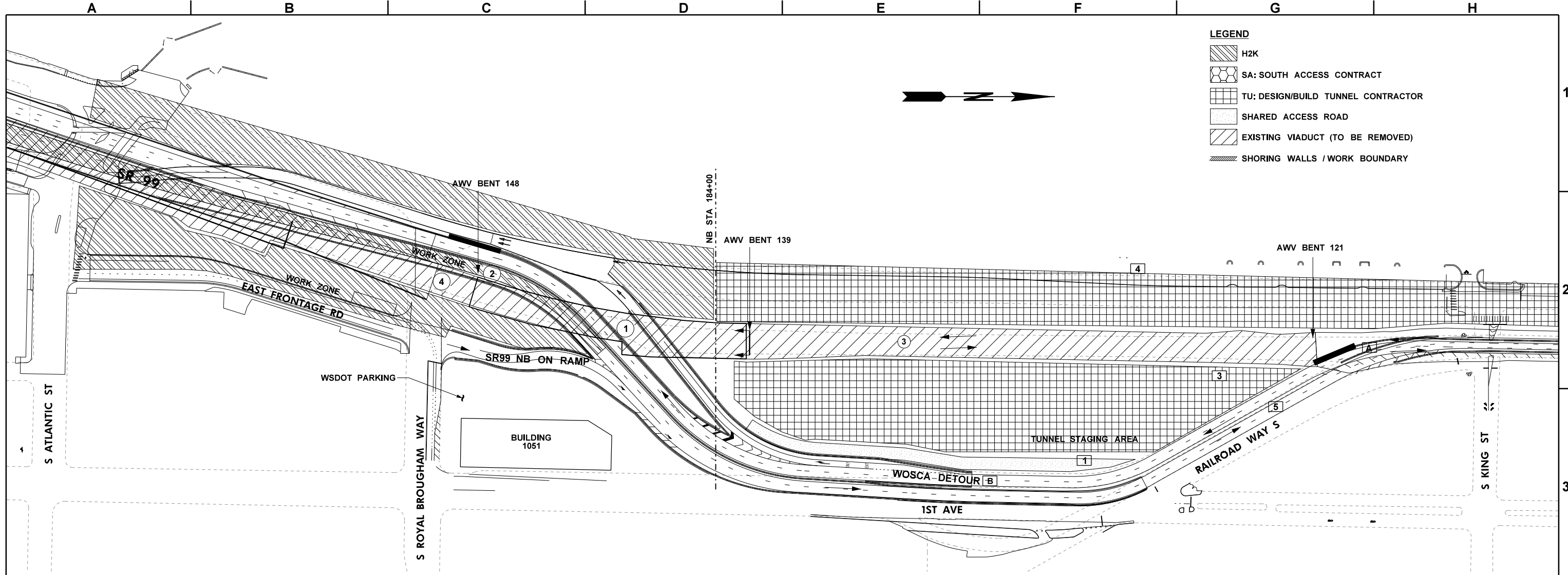
\* H2K STAGING AND TIMING AS REPRESENTED IN WSDOT S.HOLGATE TO S.KINGSTREET VIADUCT REPLACEMENT PROJECT SIMULATION

**TRAFFIC SHIFTS**

| NOTES | CONTRACT | TRAFFIC ON       |                   |
|-------|----------|------------------|-------------------|
| A     | H2K      | EXISTING VIADUCT | UNTIL MAY 4, 2012 |



|               |   |            |    |              |      |                  |  |  |  |   |                        |
|---------------|---|------------|----|--------------|------|------------------|--|--|--|---|------------------------|
| FILE NAME     | IP_PWP:dms6991046055-Txx-14SC001_OptM.DLV | REGION NO. | 10 | STATE        | WASH | FED.AID PROJ.NO. |  | <b>RFP DESIGN</b><br>SUBMITTED BY<br>SEATTLE TUNNEL PARTNERS<br><br>NOT FOR CONSTRUCTION | Washington State Department of Transportation<br>U.S. Department of Transportation Federal Highway Administration<br>City of Seattle | <b>ALASKAN WAY VIADUCT REPLACEMENT PROJECT</b><br><b>SR 99 BORED TUNNEL CONTRACT PACKAGE 14</b><br><br><b>CONSTRUCTION SEQUENCING</b> | SC001                  |
| TIME          | 20-OCT-2010 11:04                         | JOB NUMBER |    | CONTRACT NO. |      | LOCATION NO.     |  |  |  |   | SHEET 13 OF 208 SHEETS |
| DATE          | 20-OCT-2010                               |            |    |              |      |                  |  |  |  |   |                        |
| PLOTTED BY    | groe                                      |            |    |              |      |                  |  |  |  |   |                        |
| DESIGNED BY   |   |            |    |              |      |                  |  |  |  |   |                        |
| ENTERED BY    |   |            |    |              |      |                  |  |  |  |   |                        |
| CHECKED BY    |   |            |    |              |      |                  |  |  |  |   |                        |
| PROJ. ENGR.   | S. EVERETT                                |            |    |              |      |                  |  |  |  |   |                        |
| REGIONAL ADM. | R. PAANANEN                               | REVISION   |    | DATE         |      | BY               |  |  |  |   |                        |



**LEGEND**

- H2K
- SA: SOUTH ACCESS CONTRACT
- TU: DESIGN/BUILD TUNNEL CONTRACTOR
- SHARED ACCESS ROAD
- EXISTING VIADUCT (TO BE REMOVED)
- SHORING WALLS / WORK BOUNDARY

| NOTES | CONTRACT |  |  |
|-------|----------|--|--|
| 1     | TU       | BUILD AND MAINTAIN SHARED ACCESS ROAD  | AUGUST 2011 - MAY 2016   |
| 3     | TU       | DISTRIBUTION AND COMMUNICATION DUCT BANKS.   | WORK COMPLETE, INCLUDING TIE-IN PRIOR TO DEMOLITION OF BENTS 121 - 124 |
| 4     | -        | BNSF TAIL TRACK RUNS ALONG THE WEST PERIMETER OF THE STAGING AREA FROM ROYAL BROUGHAM TO KING STREET. SEE PLAN SHEETS. |  |
| 5     | TU       | RAILROAD WAY RAMPS ABOVE. STAGING PERMITTED BELOW RAMPS.   |  |

**TRAFFIC SHIFTS**

| NOTES | CONTRACT | TRAFFIC ON       |   |
|-------|----------|------------------|---|
| A     | H2K      | EXISTING VIADUCT | UNTIL MAY 4, 2012   |
| B     | H2K      | WOSCA DETOUR     | MAY 14, 2012 - DECEMBER 2013 (LIMITED WIDTH AT STRUCTURE)<br>DECEMBER 2013 - JUNE 2014 (FULL WIDTH) |

**TRAFFIC CLOSURES**

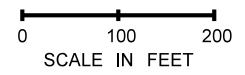
| ROADWAY MOVEMENT | DURATION        |
|------------------|-----------------|
| SOUTHBOUND SR-99 | 10 DAY CLOSURE* |
| NORTHBOUND SR-99 | 4 DAY CLOSURE*  |

\* H2K STAGING AND TIMING AS REPRESENTED IN WSDOT S.HOLGATE TO S.KINGSTREET VIADUCT REPLACEMENT PROJECT SIMULATION

**PHASE 1B MAY 4, 2012 - MAY 14, 2012 (SR-99 CLOSURE)**

| ACTIVITY IDENTIFIER | CONTRACT | ACTIVITY  | TIMING                           | EARLY CONSTRUCTION OPTIONS |
|---------------------|----------|---|----------------------------------|----------------------------|
| 1                   | H2K      | DEMO VIADUCT FROM BENT 139 TO 148                                   | AVAILABLE TO BEGIN DEMO MAY 2012 | BEGIN DEMO MAY 04, 2012*   |
| 2                   | H2K      | CONSTRUCT NB WOSCA DETOUR GAP TO H2K STRUCTURE                      |                                  | BEGIN DEMO MAY 14, 2012*   |
| 3                   | TU       | DEMO VIADUCT FROM BENT 121 TO 139                                   |                                  | BEGIN DEMO MAY 04, 2012*   |
| 4                   | H2K      | DEMO VIADUCT FROM BENT 148, SOUTH BY H2K. TU ALLOW ACCESS FOR DEMO. | AVAILABLE TO BEGIN DEMO MAY 2012 |                            |

\* H2K STAGING AND TIMING AS REPRESENTED IN WSDOT S.HOLGATE TO S.KINGSTREET VIADUCT REPLACEMENT PROJECT SIMULATION



|               |   |                  |  |
|---------------|---|------------------|--|
| FILE NAME     | IP_PWP:dms6991046055-Txx-14SC002_OptM.DLV |                  |  |
| TIME          | 20-OCT-2010 11:04                         |                  |  |
| DATE          | 20-OCT-2010                               |                  |  |
| PLOTTED BY    | groe                                      |                  |  |
| DESIGNED BY   |   |                  |  |
| ENTERED BY    |   |                  |  |
| CHECKED BY    |   |                  |  |
| PROJ. ENGR.   | S. EVERETT                                |                  |  |
| REGIONAL ADM. | R. PAANANEN                               |                  |  |
| REVISION      | DATE                                      | BY               |  |
|               |   |                  |  |
| REGION NO.    | STATE                                     | FED.AID PROJ.NO. |  |
| 10            | WASH                                      |                  |  |
| JOB NUMBER    |   |                  |  |
| CONTRACT NO.  |   | LOCATION NO.     |  |

**RFP DESIGN**  
SUBMITTED BY  
SEATTLE TUNNEL PARTNERS  
  
NOT FOR CONSTRUCTION

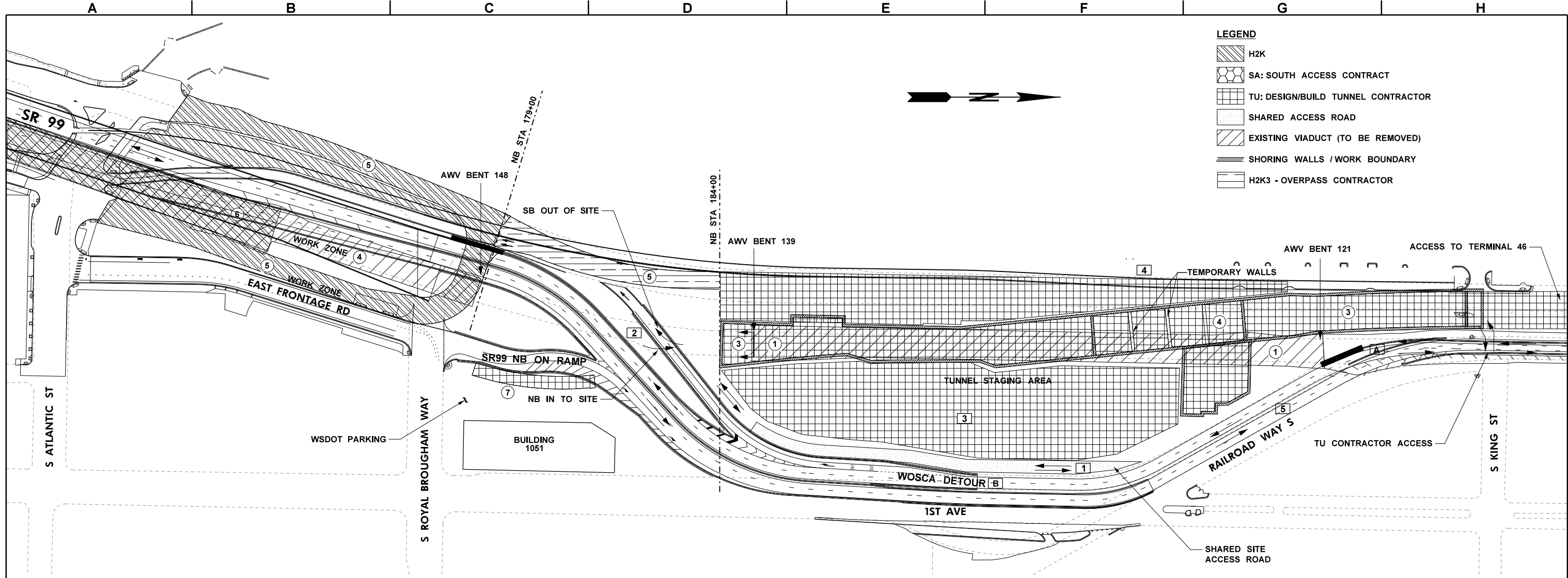


**ALASKAN WAY VIADUCT REPLACEMENT PROJECT**  
**SR 99 BORED TUNNEL CONTRACT PACKAGE 14**

**CONSTRUCTION SEQUENCING**

SC002

SHEET 14 OF 208 SHEETS



**PHASE 1C MAY 14, 2012 - AUGUST 1, 2013**

| NOTES | CONTRACT |  |  |
|-------|----------|--|--|
| 1     | TU       | BUILD AND MAINTAIN SHARED ACCESS ROAD  | AUGUST 2011 - MAY 2016   |
| 2     | TU       | INSTALL SIGNAL AND NB SITE ACCESS ROAD   | COMPLETE PRIOR TO COMMENCING SHORING WALLS                             |
| 3     | TU       | DISTRIBUTION AND COMMUNICATION DUCT BANKS.   | WORK COMPLETE, INCLUDING TIE-IN PRIOR TO DEMOLITION OF BENTS 121 - 124 |
| 4     | -        | BNSF TAIL TRACK RUNS ALONG THE WEST PERIMETER OF THE STAGING AREA FROM ROYAL BROUGHAM TO KING STREET. SEE PLAN SHEETS. |  |
| 5     | TU       | RAILROAD WAY RAMPS ABOVE. STAGING PERMITTED BELOW RAMPS.   |  |
|       | TU       | FINAL DESIGN COORDINATION WITH SA.   | JANUARY 1, 2013  |

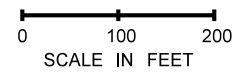
**TRAFFIC SHIFTS**

| NOTES | CONTRACT | TRAFFIC ON       |  |
|-------|----------|------------------|--|
| A     | H2K      | EXISTING VIADUCT | UNTIL MAY 4, 2012  |
| B     | H2K      | WOSCA DETOUR     | MAY 14, 2012 - DECEMBER 2013 (LIMITED WIDTH AT H2K2 STRUCTURE)<br>DECEMBER 2013 - JUNE 2014 (FULL WIDTH) |

\* H2K STAGING AND TIMING AS REPRESENTED IN WSDOT S.HOLGATE TO S.KINGSTREET VIADUCT REPLACEMENT PROJECT SIMULATION

| ACTIVITY IDENTIFIER | CONTRACT | ACTIVITY  | TIMING   | EARLY CONSTRUCTION OPTIONS                          |
|---------------------|----------|---|--|---|
| 1                   | TU       | DEMO VIADUCT FROM BENT 121-139.   |  | MAY 2012 - JULY 2012                                |
| 3                   | TU       | CONSTRUCT SHORING WALL FOR RAMPS AND MAINLINE STRUCTURE. EXCAVATION COMPLETE. CONSTRUCTION SHORING WALLS FOR VENT BUILDING. |  | JUNE 2012 - MAY 2013                                |
| 4                   | TU       | ASSEMBLE AND LAUNCH TBM   |  | MARCH 2013 - JUNE 2013                              |
| 5                   | H2K      | CONSTRUCT EAST AND WEST HALVES OF LITTLE H CROSSING STRUCTURE.  | WEST HALF SEPT 2012 - FEB 2012<br>EAST HALF FEB 2012 - DEC 2013<br>NORTH LEG FEB 2013 - DEC 2013 |   |
| 6                   | H2K      | CONSTRUCT EAST HALF BRIDGE 99/540. SB 99 MAINLINE CONNECTION OPEN.  | WOSCA DETOUR TIE-IN BY 12/24/2011  |   |
| 7                   | TU       | CONSTRUCT SOUTH HALF NB ON RAMP   |  | AUGUST 2013 - MARCH 2014 (LATE CONSTRUCTION OPTION) |

\* H2K STAGING AND TIMING AS REPRESENTED IN WSDOT S.HOLGATE TO S.KINGSTREET VIADUCT REPLACEMENT PROJECT SIMULATION



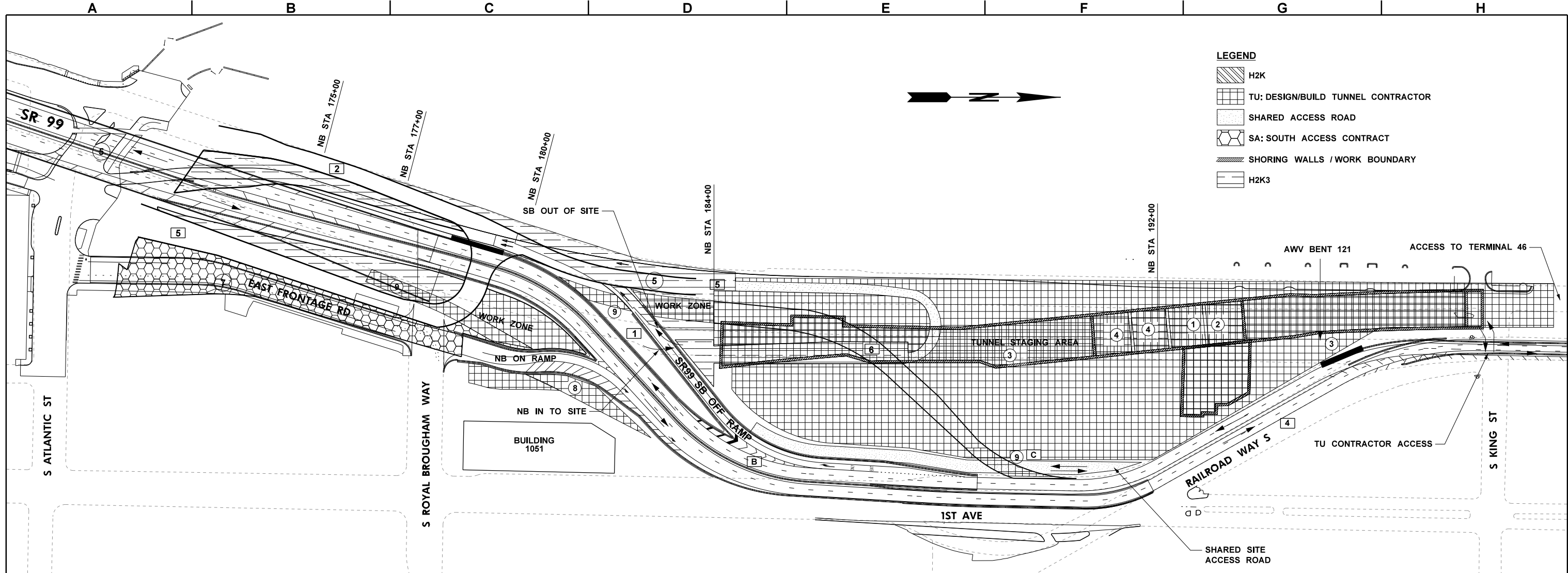
|               |   |                  |  |
|---------------|---|------------------|--|
| FILE NAME     | IP_PWP:dms6991046055-Txx-14SC003_OptM.DLV |                  |  |
| TIME          | 20-OCT-2010 11:05                         |                  |  |
| DATE          | 20-OCT-2010                               |                  |  |
| PLOTTED BY    | groe                                      |                  |  |
| DESIGNED BY   |   |                  |  |
| ENTERED BY    |   |                  |  |
| CHECKED BY    |   |                  |  |
| PROJ. ENGR.   | S. EVERETT                                |                  |  |
| REGIONAL ADM. | R. PAANANEN                               |                  |  |
| REVISION      | DATE                                      | BY               |  |
|               |   |                  |  |
| REGION NO.    | STATE                                     | FED.AID PROJ.NO. |  |
| 10            | WASH                                      |                  |  |
| JOB NUMBER    |   |                  |  |
| CONTRACT NO.  |   | LOCATION NO.     |  |

**RFP DESIGN**  
SUBMITTED BY  
SEATTLE TUNNEL PARTNERS  
  
NOT FOR CONSTRUCTION



**ALASKAN WAY VIADUCT REPLACEMENT PROJECT**  
**SR 99 BORED TUNNEL CONTRACT PACKAGE 14**  
**CONSTRUCTION SEQUENCING**

SC003  
SHEET 15 OF 208 SHEETS



**PHASE 2A AUGUST 1, 2013 - JUNE 3, 2014**

| NOTES | CONTRACT |   |                  |
|-------|----------|---|------------------|
| 1     | TU       | MAINTAIN SIGNAL AND NB SITE ACCESS ROAD   |                  |
| 2     | H2K3     | SOUTH LEGS OPEN TO PORT TRAFFIC. NORTH LEG OPEN TO H2K3.  | DECEMBER 1, 2013 |
| 3     |          | EXISTING VIADUCT IN PLACE FROM BENT 121 NORTH.  |                  |
| 4     | TU       | RAILROAD WAY RAMPS ABOVE. STAGING PERMITTED BELOW RAMPS   |                  |
| 5     | TU       | NORTHBOUND CONSTRUCTION ACCESS ROAD ELIMINATED AT ATLANTIC UPON OPENING OF H2K3 SOUTH LEGS TO PORT TRAFFIC. TU CONSTRUCTION ACCESS ROAD SHIFTED TO H2K3 NORTH LEG. SHARE ACCESS WITH SA ON NORTH LEG. | DECEMBER 1, 2013 |
| 6     | TU       | SOUTH ACCESS DETOUR CONSTRUCTED OVER CUT-AND COVER (AT-GRADE)   | MAY 6, 2014      |

| ACTIVITY IDENTIFIER | CONTRACT | ACTIVITY   | TIMING           | EARLY CONSTRUCTION OPTIONS                          |
|---------------------|----------|--|------------------|---|
| 1                   | TU       | TUNNELING PROCESS. TBM RETRIEVAL AT NORTH PORTAL |                  | NOVEMBER 26, 2014                                   |
| 2                   | TU       | INTERNAL STRUCTURE AND SYSTEMS WORK UNDER WAY    |                  |   |
| 3                   | TU       | CONSTRUCT CUT-AND-COVER STRUCTURE                |                  | MAY 2013 - MAY 2014                                 |
| 4                   | TU       | CLOSE AND FILL TWO SOUTH BAY TO GRADE            |                  | SEPTEMBER 2013 - APRIL 2014                         |
| 5                   | H2K3     | COMPLETE NORTH LEG AND RETAINED FILL             | DECEMBER 1, 2013 |   |
| 6                   | H2K      | WORK COMPLETE                                    | DECEMBER 2, 2013 |   |
| 7                   | SA       | BEGIN SURFACE STREET RECONSTRUCTION              |                  |   |
| 8                   | TU       | FINISH SOUTH HALF OF NBOB RAMP                   |                  | AUGUST 2013 - MARCH 2014 (LATE CONSTRUCTION OPTION) |
| 9                   | TU       | CONSTRUCT SOUTH ACCESS DETOUR                    |                  |   |

**TRAFFIC SHIFTS**

| NOTES | CONTRACT | TRAFFIC ON          |                           |
|-------|----------|---------------------|---------------------------|
| B     | H2K      | WOSCA DETOUR        | MAY 2012 - JUNE 2014      |
| C     | SA       | SOUTH ACCESS DETOUR | JUNE 2014 - NOVEMBER 2015 |

|               |   |                  |  |
|---------------|---|------------------|--|
| FILE NAME     | IP_PWP:dms6991046055-Txx-14SC004_OptM.DLV |                  |  |
| TIME          | 20-OCT-2010 11:05                         |                  |  |
| DATE          | 20-OCT-2010                               |                  |  |
| PLOTTED BY    | groe                                      |                  |  |
| DESIGNED BY   |   |                  |  |
| ENTERED BY    |   |                  |  |
| CHECKED BY    |   |                  |  |
| PROJ. ENGR.   | S. EVERETT                                |                  |  |
| REGIONAL ADM. | R. PAANANEN                               |                  |  |
| REVISION      | DATE                                      | BY               |  |
|               |   |                  |  |
| REGION NO.    | STATE                                     | FED.AID PROJ.NO. |  |
| 10            | WASH                                      |                  |  |
| JOB NUMBER    |   |                  |  |
| CONTRACT NO.  |   | LOCATION NO.     |  |

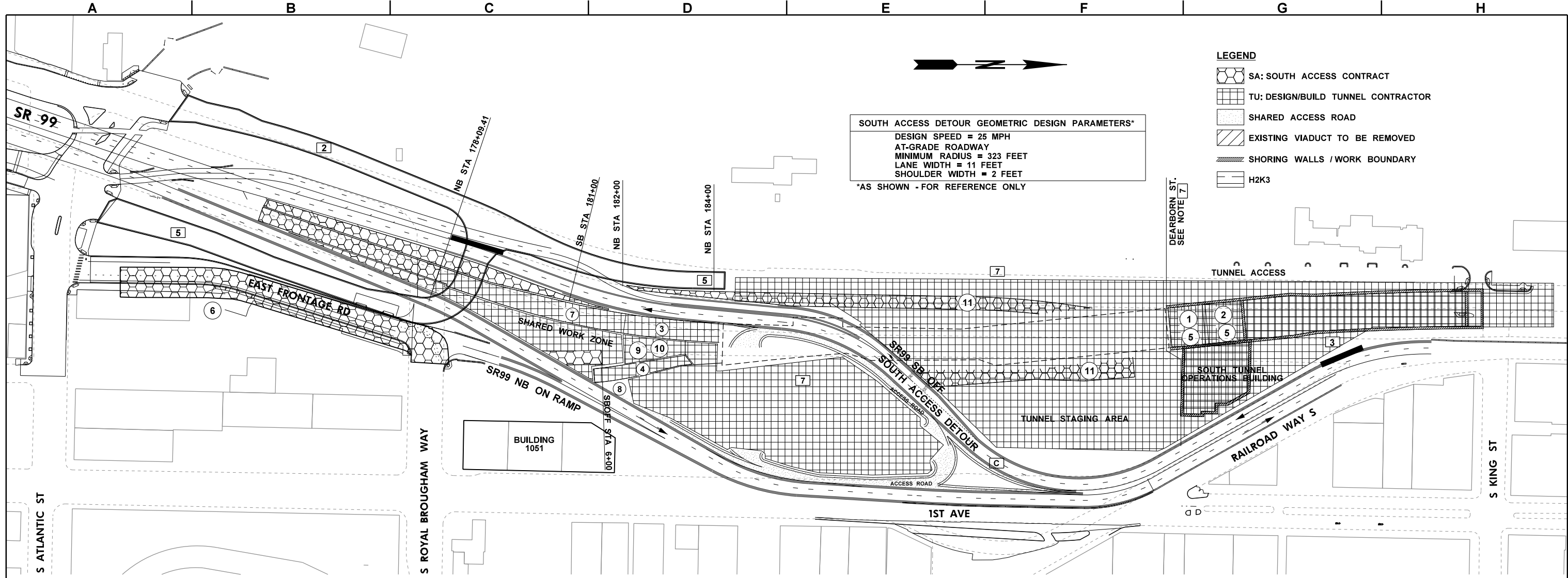
**RFP DESIGN**  
 SUBMITTED BY  
 SEATTLE TUNNEL PARTNERS  
 NOT FOR CONSTRUCTION



**ALASKAN WAY VIADUCT  
 REPLACEMENT PROJECT  
 SR 99 BORED TUNNEL  
 CONTRACT PACKAGE 14**

**CONSTRUCTION SEQUENCING**

SC004  
 SHEET  
 16  
 OF  
 208  
 SHEETS



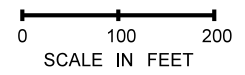
**PHASE 2B JUNE 3, 2014 - APRIL 10, 2015**

| NOTES | CONTRACT |  |                  |
|-------|----------|--|------------------|
| 2     | H2K3     | SOUTH LEGS OPEN TO PORT TRAFFIC. NORTH LEG OPEN TO H2K3.   | DECEMBER 1, 2013 |
| 3     |          | EXISTING VIADUCT IN PLACE FROM BENT 121 NORTH.   |                  |
| 4     | TU       | RAILROAD WAY RAMPS ABOVE. STAGING PERMITTED BELOW RAMPS  |                  |
| 5     | TU       | NORTHBOUND CONSTRUCTION ACCESS ROAD ELIMINATED AT ATLANTIC UPON OPENING OF H2K3 SOUTH LEGS TO PORT TRAFFIC. TU CONSTRUCTION ACCESS ROAD SHIFTED TO H2K3 NORTH LEG. SHARE ACCESS WITH SA ON NORTH LEG.  | DECEMBER 1, 2013 |
| 7     | SA/TU    | WOSCA STAGING AREA SOUTH OF DEARBORN RELINQUISHED TO SA, EXCEPT AREA NORTH AND WEST OF THE SR99 SB DETOUR SHALL BE SHARED ACCESS WITH SA FOR CONSTRUCTION OF SR99 SB ON RAMP AND NB OFF RAMP AND SHARED ACCESS WITH OTHERS TO PULL WIRE AND INSTALL EQUIPMENT IN THE TUNNEL OPERATIONS BUILDING AND CUT-AND-COVER STRUCTURE. | FEBRUARY 8, 2015 |

| ACTIVITY IDENTIFIER | CONTRACT | ACTIVITY  | TIMING | EARLY CONSTRUCTION OPTIONS |
|---------------------|----------|---|--------|----------------------------|
| 1                   | TU       | COMPLETE TUNNEL INTERIOR/PREPARE FOR SYSTEMS COMMISSIONING.   |        |                            |
| 2                   | TU       | BUILD OUT VENTILATION BUILDING. COMPLETE SYSTEMS WORK. ALLOW ACCESS TO OPERATIONS BUILDING FOR OTHERS TO PULL WIRE. |        |                            |
| 3                   | TU       | FINISH NB SR-99 CUT AND COVER SECTION   |        | JANUARY 2015               |
| 4                   | TU       | FINISH NB SR-99 ON RAMP CUT AND COVER SECTION   |        |                            |
| 5                   | TU       | CLOSE AND FILL TWO REMAINING BAYS TO GRADE  |        | FEBRUARY 2015 - JULY 2015  |
| 6                   | SA       | BEGIN SURFACE STREET RECONSTRUCTION   |        |                            |
| 7                   | TU       | CONSTRUCT AND CONNECT NB ML U-SECTION TO CUT-AND-COVER  |        | JUNE 2014 - JULY 2015      |
| 8                   | TU       | CONSTRUCT NB ON RAMP U-SECTION TO CUT-AND-COVER   |        | JULY 2014 - APRIL 2015     |
| 9                   | SA       | BEGIN NB OFF RAMP PIER AND ABUTMENT   |        | DECEMBER 2014 - APRIL 2015 |
| 10                  | TU/SA    | CONSTRUCT SB AND SB OFF RAMP AT GRADE   |        | DECEMBER 2014 - APRIL 2015 |
| 11                  | SA       | BEGIN CONSTRUCTION OF SB ON AND NB OFF RAMP SURFACE STREETS SOUTH OF DEARBORN.                                      |        | FEBRUARY 2015              |

**TRAFFIC SHIFTS**

| NOTES | CONTRACT | TRAFFIC ON          |                           |
|-------|----------|---------------------|---------------------------|
| C     | SA       | SOUTH ACCESS DETOUR | JUNE 2014 - NOVEMBER 2015 |



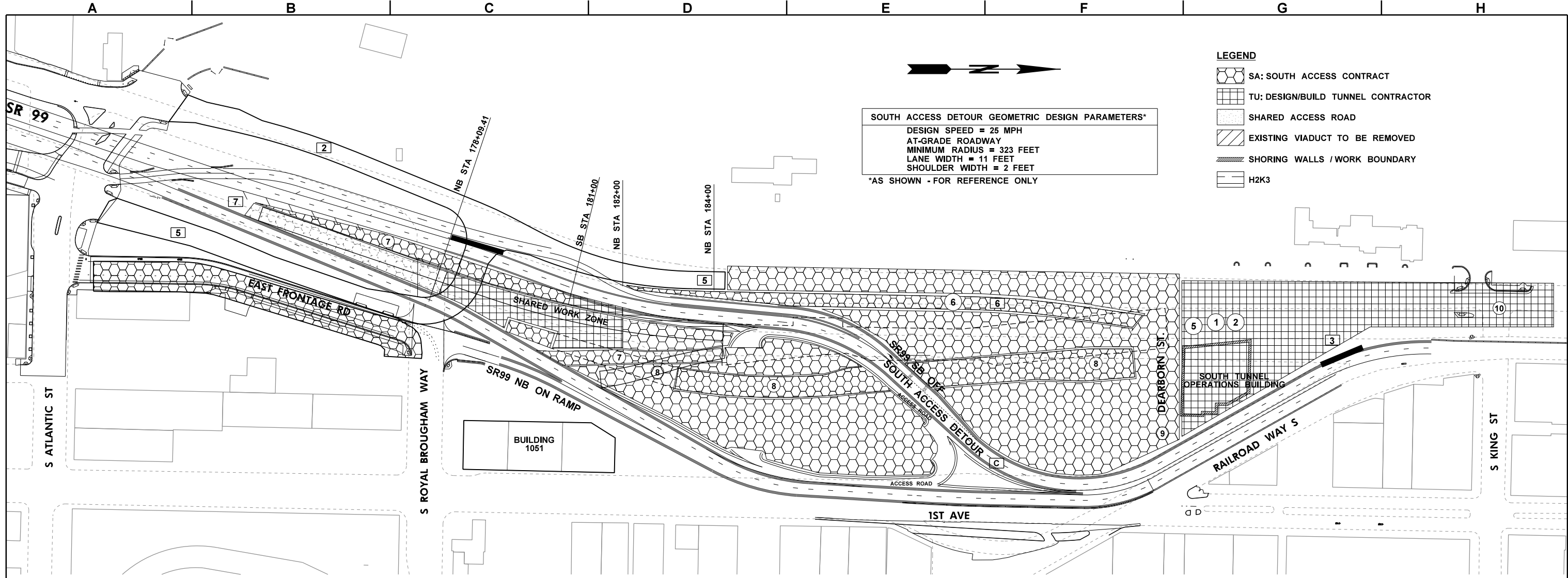
|               |   |                  |  |
|---------------|---|------------------|--|
| FILE NAME     | IP_PWP:dms6991046055-Txx-14SC005_OptM.DLV |                  |  |
| TIME          | 20-OCT-2010 11:05                         |                  |  |
| DATE          | 20-OCT-2010                               |                  |  |
| PLOTTED BY    | groe                                      |                  |  |
| DESIGNED BY   |   |                  |  |
| ENTERED BY    |   |                  |  |
| CHECKED BY    |   |                  |  |
| PROJ. ENGR.   | S. EVERETT                                |                  |  |
| REGIONAL ADM. | R. PAANANEN                               |                  |  |
| REVISION      | DATE                                      | BY               |  |
|               |   |                  |  |
| REGION NO.    | STATE                                     | FED.AID PROJ.NO. |  |
| 10            | WASH                                      |                  |  |
| JOB NUMBER    |   |                  |  |
| CONTRACT NO.  |   | LOCATION NO.     |  |

**RFP DESIGN**  
 SUBMITTED BY  
 SEATTLE TUNNEL PARTNERS  
 NOT FOR CONSTRUCTION



**ALASKAN WAY VIADUCT REPLACEMENT PROJECT**  
**SR 99 BORED TUNNEL CONTRACT PACKAGE 14**  
**CONSTRUCTION SEQUENCING**

SC005  
 SHEET 17 OF 208 SHEETS



**SOUTH ACCESS DETOUR GEOMETRIC DESIGN PARAMETERS\***  
 DESIGN SPEED = 25 MPH  
 AT-GRADE ROADWAY  
 MINIMUM RADIUS = 323 FEET  
 LANE WIDTH = 11 FEET  
 SHOULDER WIDTH = 2 FEET  
 \*AS SHOWN - FOR REFERENCE ONLY

- LEGEND**
- SA: SOUTH ACCESS CONTRACT
  - TU: DESIGN/BUILD TUNNEL CONTRACTOR
  - SHARED ACCESS ROAD
  - EXISTING VIADUCT TO BE REMOVED
  - SHORING WALLS / WORK BOUNDARY
  - H2K3

**PHASE 2C APRIL 10, 2015 - NOVEMBER 1, 2015**

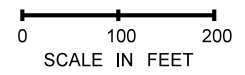
(WORK IN ADJACENT PHASES 3 AND 4A HAVE BEEN MOVED INTO EARLIER PHASES)

| NOTES | CONTRACT |   |                  |
|-------|----------|---|------------------|
| 2     | H2K3     | SOUTH LEGS OPEN TO PORT TRAFFIC. NORTH LEG OPEN TO H2K3.  | DECEMBER 1, 2013 |
| 3     |          | EXISTING VIADUCT IN PLACE FROM BENT 121 NORTH.  |                  |
| 4     | TU       | RAILROAD WAY RAMPS ABOVE. STAGING PERMITTED BELOW RAMPS   |                  |
| 5     | TU       | NORTHBOUND CONSTRUCTION ACCESS ROAD ELIMINATED AT ATLANTIC UPON OPENING OF H2K3 SOUTH LEGS TO PORT TRAFFIC. TU CONSTRUCTION ACCESS ROAD SHIFTED TO H2K3 NORTH LEG. SHARE ACCESS WITH SA ON NORTH LEG. | DECEMBER 1, 2013 |
| 6     | SA       | RELINQUISH REMAINDER OF WOSCA STAGING AREA  | MAY 1, 2015      |
| 7     | SA       | TURN OVER REMAINDER OF SURFACE WORK AREA TO SA TO TIE ROADWAY TO TUNNEL   | NOVEMBER 1, 2015 |

| ACTIVITY IDENTIFIER | CONTRACT | ACTIVITY  | TIMING | EARLY CONSTRUCTION OPTIONS |
|---------------------|----------|---|--------|----------------------------|
| 1                   | TU       | COMPLETE TUNNEL INTERIOR STRUCTURE  |        | OCTOBER 2015               |
| 2                   | TU       | COMPLETE VENTILATION BUILDING, SYSTEMS WORK, AND COMMISSIONING.   |        | NOVEMBER 2015              |
| 5                   | TU       | FINISH FILLING BAYS TO GRADE  |        | JULY 2015                  |
| 6                   | SA       | CONSTRUCT SB ON AT-GRADE  |        | JULY 2015                  |
| 7                   | TU/SA    | CONSTRUCT AND CONNECT SB ML AND SB OFF AT-GRADE TO CUT-AND-COVER. TIE TUNNEL ROADWAY TO H2K2 EMBANKMENT |        | APRIL 2015 - AUGUST 2015   |
| 8                   | SA       | CONSTRUCT NB OFF RAMP AND BRIDGE DECK   |        | APRIL 2015 - JULY 2015     |
| 9                   | SA       | SURFACE IMPROVEMENTS TO SOUTH SIDE OF DEARBORN ST.  |        | FEBRUARY 2015              |
| 10                  | SA       | SURFACE IMPROVEMENTS TO KING ST. AND REMAINING DEARBORN, NB OFF AND SB ON RAMPS                         |        | JULY 2015                  |

**TRAFFIC SHIFTS**

| NOTES | CONTRACT | TRAFFIC ON          |                           |
|-------|----------|---------------------|---------------------------|
| C     | SA       | SOUTH ACCESS DETOUR | JUNE 2014 - NOVEMBER 2015 |



|               |  |                  |  |
|---------------|--|------------------|--|
| FILE NAME     | IP_PWP:dms69910\46055-Txx-14SC006_OptM.DLV |                  |  |
| TIME          | 20-OCT-2010 11:06                          |                  |  |
| DATE          | 20-OCT-2010                                |                  |  |
| PLOTTED BY    | groe                                       |                  |  |
| DESIGNED BY   |  |                  |  |
| ENTERED BY    |  |                  |  |
| CHECKED BY    |  |                  |  |
| PROJ. ENGR.   | S. EVERETT                                 |                  |  |
| REGIONAL ADM. | R. PAANANEN                                |                  |  |
| REVISION      | DATE                                       | BY               |  |
|               |  |                  |  |
| REGION NO.    | STATE                                      | FED.AID PROJ.NO. |  |
| 10            | WASH                                       |                  |  |
| JOB NUMBER    |  |                  |  |
| CONTRACT NO.  |  | LOCATION NO.     |  |

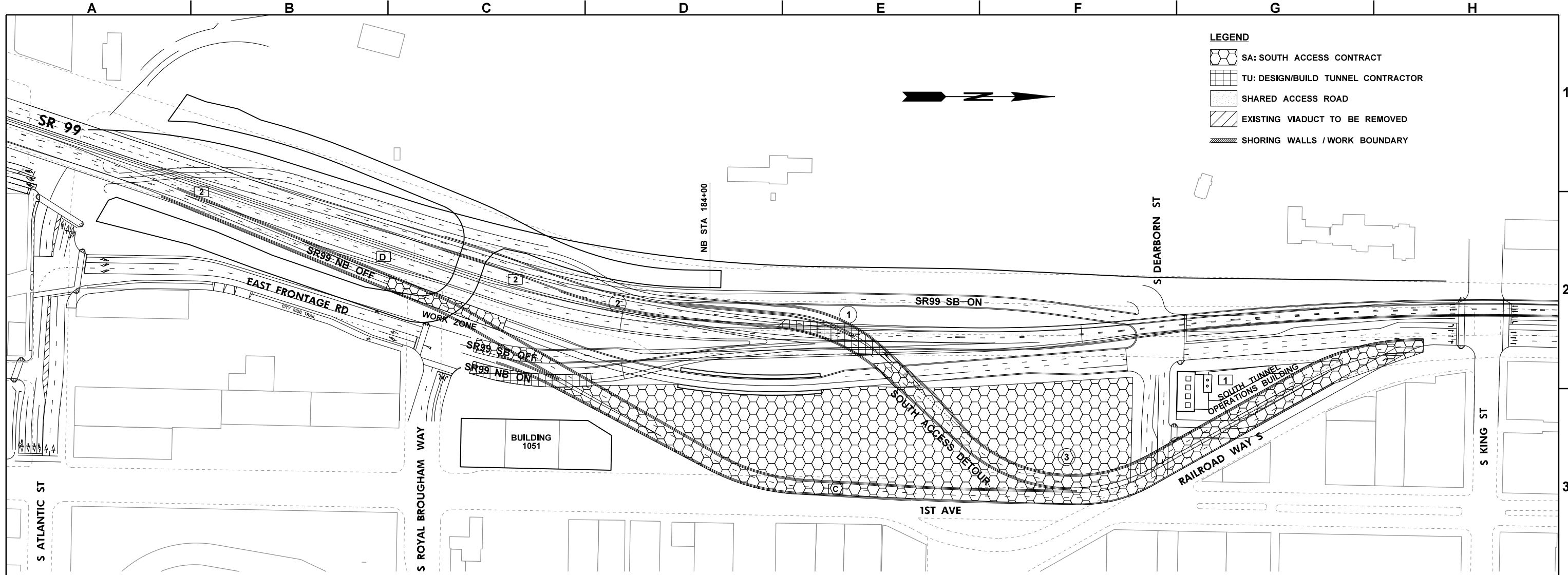
**RFP DESIGN**  
 SUBMITTED BY  
 SEATTLE TUNNEL PARTNERS  
 NOT FOR CONSTRUCTION



**ALASKAN WAY VIADUCT REPLACEMENT PROJECT**  
**SR 99 BORED TUNNEL CONTRACT PACKAGE 14**  
**CONSTRUCTION SEQUENCING**

SC006  
 SHEET 18 OF 208 SHEETS





**PHASE 4B NOVEMBER 1, 2015 - NOVEMBER 10, 2015**  
 (WORK IN ADJACENT PHASES 3 AND 4A HAVE BEEN MOVED INTO EARLIER PHASES)

| NOTE | CONTRACT |   |                      |
|------|----------|---|----------------------|
| 1    | TU       | TU RESTORE SITE AT COMPLETION OF WORK. COORDINATE WITH SA AT INTERFACE. | PREVIOUSLY COMPLETED |
| 2    | SA       | COMPLETE MAINLINE TIE-INS, SIGN AND STRIPE                              |                      |

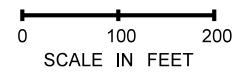
**TRAFFIC SHIFTS**

| NOTES | CONTRACT | TRAFFIC ON          |                              |
|-------|----------|---------------------|------------------------------|
| C     | SA       | SOUTH ACCESS DETOUR | JUNE 2014 - OCTOBER 20, 2015 |
| D     | SA       | SR-99 TUNNEL        | NOVEMBER 1, 2015             |

**TRAFFIC CLOSURES**

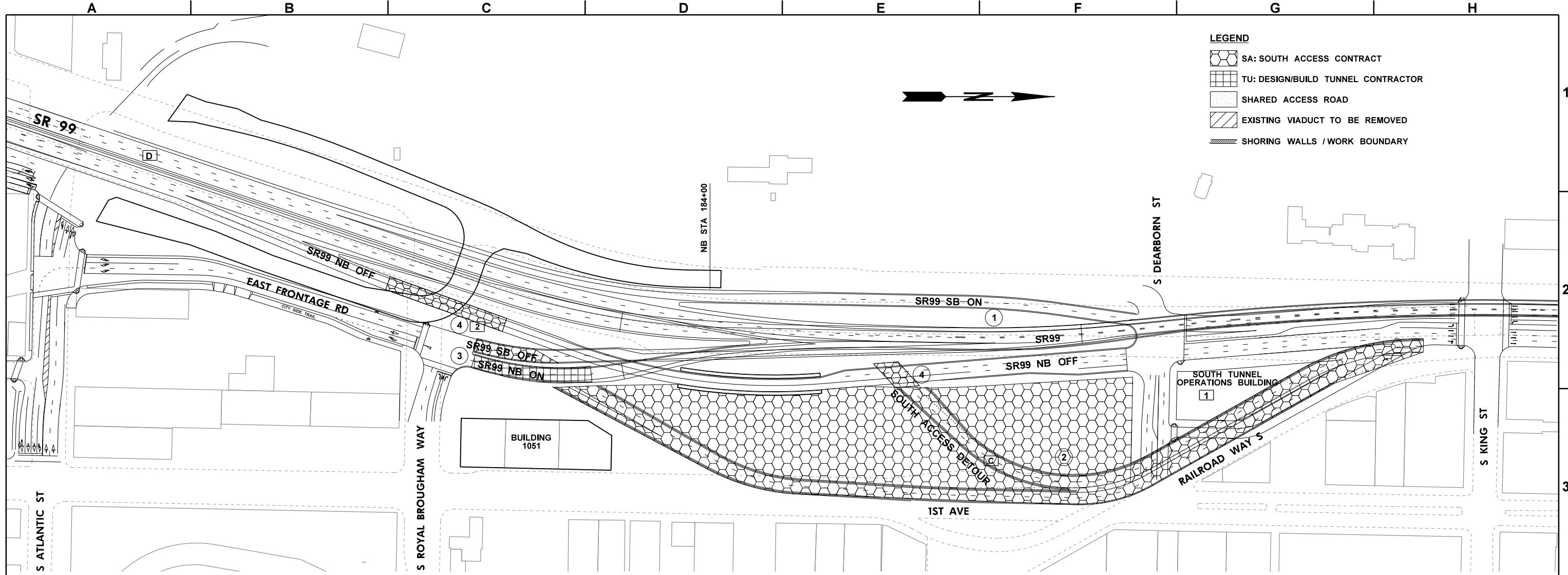
| ROADWAY MOVEMENT                      | DURATION       |
|---------------------------------------|----------------|
| SR-99 NORTHBOUND AND SR-99 SOUTHBOUND | 10 DAY CLOSURE |

| ACTIVITY IDENTIFIER | CONTRACT | ACTIVITY  | TIMING | EARLY CONSTRUCTION OPTIONS |
|---------------------|----------|---|--------|----------------------------|
| 1                   | TU       | REMOVE SOUTH ACCESS DETOUR FROM SR-99 MAIN LINE.  |        |                            |
| 2                   | TU       | CONSTRUCT REMAINING SB SR-99 AT-GRADE ROADWAY   |        |                            |
| 3                   | SA       | SURFACE IMPROVEMENTS CONTRACTOR WORKING WITHIN WORK ZONE:   |        |                            |
|                     |          | A. REMOVE SOUTH ACCESS DETOUR.<br>B. REBUILD FIRST AVENUE.<br>C. DEMOLISH RAILROAD WAY RAMPS AND ALASKAN WAY VIADUCT FROM BENT 121 TO BENT 112.<br>D. CONVERT RAILROAD AVENUE TO PEDESTRIAN PATH.<br>E. CONSTRUCT VENTILATION BUILDING PARKING STRUCTURE. |        |                            |



|               |   |    |              |                  |
|---------------|---|----|--------------|------------------|
| FILE NAME     | IP_PWP:dms6991046055-Txx-14SC007_OptM.DLV |    |              |                  |
| TIME          | 20-OCT-2010 11:06                         |    |              |                  |
| DATE          | 20-OCT-2010                               |    |              |                  |
| PLOTTED BY    | groe                                      |    |              |                  |
| DESIGNED BY   |   |    |              |                  |
| ENTERED BY    |   |    |              |                  |
| CHECKED BY    |   |    |              |                  |
| PROJ. ENGR.   | S. EVERETT                                |    |              |                  |
| REGIONAL ADM. | R. PAANANEN                               |    |              |                  |
| REVISION      | DATE                                      | BY | REGION NO.   | STATE            |
|               |   |    | 10           | WASH             |
|               |   |    | JOB NUMBER   | FED.AID PROJ.NO. |
|               |   |    | CONTRACT NO. | LOCATION NO.     |

|  |  |   |                        |
|--|--|---|------------------------|
| <b>RFP DESIGN</b><br>SUBMITTED BY<br>SEATTLE TUNNEL PARTNERS<br><br>NOT FOR CONSTRUCTION |  | <b>ALASKAN WAY VIADUCT REPLACEMENT PROJECT</b><br><b>SR 99 BORED TUNNEL CONTRACT PACKAGE 14</b> | <b>SC007</b>           |
|  |  |   | SHEET 19 OF 208 SHEETS |
|  |  | <b>CONSTRUCTION SEQUENCING</b>  |                        |



**PHASE 5A NOVEMBER 10, 2015 - DECEMBER 15, 2015**

| NOTE | CONTRACT |   |                      |
|------|----------|---|----------------------|
| 1    | TU       | TU RESTORE SITE AT COMPLETION OF WORK, COORDINATE WITH SA AT INTERFACE. | PREVIOUSLY COMPLETED |
| 2    | SA       | OPENING OF SR-99 NB OFF   | DECEMBER 15, 2015    |

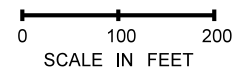
**TRAFFIC SHIFTS**

| NOTES | CONTRACT | TRAFFIC ON   |               |
|-------|----------|--------------|---------------|
| D     | SA       | SR-99 TUNNEL | NOVEMBER 2016 |

**TRAFFIC CLOSURES**

| ROADWAY MOVEMENTS                                      | DURATION |
|--|----------|
| SR-99 SOUTHBOUND OFF RAMP AND SR-99 NORTHBOUND ON RAMP | 10 DAYS  |

| ACTIVITY IDENTIFIER | CONTRACT | ACTIVITY   | TIMING | EARLY CONSTRUCTION OPTIONS    |
|---------------------|----------|--|--------|-------------------------------|
| 1                   |          | SR-99 MAIN LINE OPERATIONAL.   |        |                               |
| 2                   | SA       | SURFACE IMPROVEMENTS CONTRACTOR WORKING WITHIN WORK ZONE:<br>A. REMOVE SOUTH ACCESS DETOUR.<br>B. REBUILD FIRST AVENUE.<br>C. DEMOLISH RAILROAD WAY RAMPS AND ALASKAN WAY VIADUCT FROM BENT 121 TO BENT 112.<br>D. CONVERT RAILROAD AVENUE TO PEDESTRIAN PATH.<br>E. CONSTRUCT VENTILATION BUILDING PARKING STRUCTURE. |        |                               |
| 3                   | SA/TU    | CONSTRUCT EXCAVATE NB ON AND SB OFF RAMP   |        | NOVEMBER 2015 - DECEMBER 2015 |
| 4                   | SA       | CONSTRUCT NB OFF   |        | NOVEMBER 2015 - DECEMBER 2015 |



|               |   |                  |  |
|---------------|---|------------------|--|
| FILE NAME     | IP_PWP:dms6991046055-Txx-14SC008_OptM.DLV |                  |  |
| TIME          | 20-OCT-2010 11:06                         |                  |  |
| DATE          | 20-OCT-2010                               |                  |  |
| PLOTTED BY    | groe                                      |                  |  |
| DESIGNED BY   |   |                  |  |
| ENTERED BY    |   |                  |  |
| CHECKED BY    |   |                  |  |
| PROJ. ENGR.   | S. EVERETT                                |                  |  |
| REGIONAL ADM. | R. PAANANEN                               |                  |  |
| REVISION      | DATE                                      | BY               |  |
|               |   |                  |  |
| REGION NO.    | STATE                                     | FED.AID PROJ.NO. |  |
| 10            | WASH                                      |                  |  |
| JOB NUMBER    |   |                  |  |
| CONTRACT NO.  |   | LOCATION NO.     |  |

**RFP DESIGN**  
SUBMITTED BY  
SEATTLE TUNNEL PARTNERS

NOT FOR CONSTRUCTION

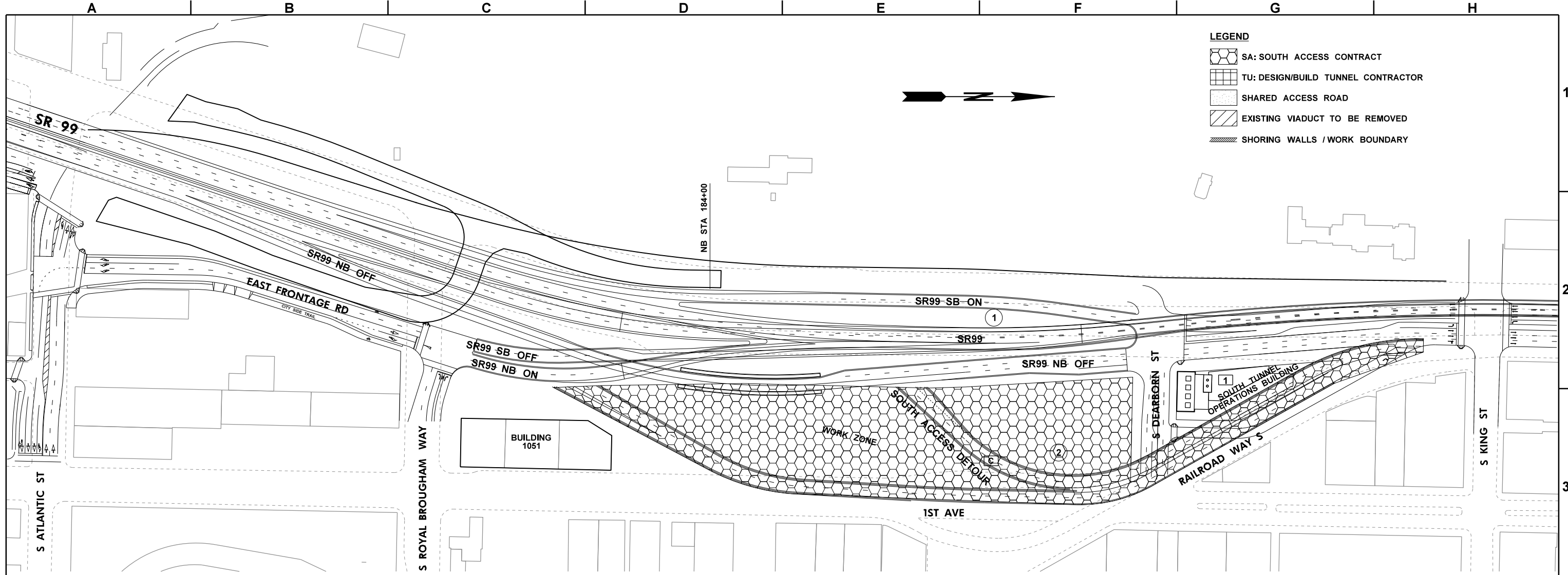
**ALASKAN WAY VIADUCT REPLACEMENT PROJECT**  
**SR 99 BORED TUNNEL CONTRACT PACKAGE 14**

**CONSTRUCTION SEQUENCING**

SC008

SHEET 20 OF 208 SHEETS





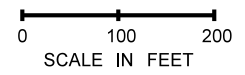
**PHASE 5B DECEMBER 15, 2015 - DECEMBER 31, 2016**

| NOTE | CONTRACT |   |                      |
|------|----------|---|----------------------|
| 1    | TU       | TU RESTORE SITE AT COMPLETION OF WORK. COORDINATE WITH SA AT INTERFACE. | PREVIOUSLY COMPLETED |

**TRAFFIC SHIFTS**

| NOTES | CONTRACT | TRAFFIC ON   |               |
|-------|----------|--------------|---------------|
| D     | SA       | SR-99 TUNNEL | NOVEMBER 2015 |

| ACTIVITY IDENTIFIER | CONTRACT | ACTIVITY  | TIMING | EARLY CONSTRUCTION OPTIONS |
|---------------------|----------|---|--------|----------------------------|
| 1                   |          | SR-99 FULLY OPERATIONAL.  |        |                            |
| 2                   | SA       | SURFACE IMPROVEMENTS CONTRACTOR WORKING WITHIN WORK ZONE:                         |        |                            |
|                     |          | A. REMOVE SOUTH ACCESS DETOUR.  |        |                            |
|                     |          | B. REBUILD FIRST AVENUE.  |        |                            |
|                     |          | C. DEMOLISH RAILROAD WAY RAMPS AND ALASKAN WAY VIADUCT FROM BENT 121 TO BENT 112. |        |                            |
|                     |          | D. CONVERT RAILROAD AVENUE TO PEDESTRIAN PATH.                                    |        |                            |
|                     |          | E. CONSTRUCT VENTILATION BUILDING PARKING STRUCTURE.                              |        |                            |



|   |                  |               |                        |                           |          |                      |    |   |  |  |                    |   |  |                         |  |
|---|------------------|---------------|------------------------|---------------------------|----------|----------------------|----|---|--|--|--------------------|---|--|-------------------------|--|
| FILE NAME IP_PWP:dms6991046055-Txx-14SC009_OptM.DLV |                  | REGION NO. 10 |                        | STATE WASH                |          | FED.AID PROJ.NO.     |    | RFP DESIGN<br>SUBMITTED BY<br>SEATTLE TUNNEL PARTNERS | Washington State<br>Department of Transportation | U.S. Department of Transportation<br>Federal Highway<br>Administration | City of<br>Seattle | ALASKAN WAY VIADUCT<br>REPLACEMENT PROJECT<br>SR 99 BORED TUNNEL<br>CONTRACT PACKAGE 14 |  | SC009                   |  |
| TIME 20-OCT-2010 11:07                              | DATE 20-OCT-2010 | JOB NUMBER    |                        | LOCATION NO.              |          | NOT FOR CONSTRUCTION |    |   |  |  |                    |   |  | CONSTRUCTION SEQUENCING |  |
| DESIGNED BY   | ENTERED BY       | CHECKED BY    | PROJ. ENGR. S. EVERETT | REGIONAL ADM. R. PAANANEN | REVISION | DATE                 | BY |   |  |  |                    |   |  |                         |  |